

1) CONSTRUCTION:		NOM. DIA.
CONDUCTOR:	20 AWG STRANDED 10/30 BARE COPPER	.037"
INSULATION:	POLYVINYLCHLORIDE, .013" NOM. WALL THICKNESS	.063"
TRIAD:	(3) INSULATED COLOR CODED SINGLES TWISTED TOGETHER TO FORM A CABLE CORE	.135"
SHIELD:	AN ALUMINIZED POLYESTER FOIL SHIELD (FOIL OUT, 100% COVERAGE) SHALL BE APPLIED OVER THE CABLE CORE AND SHALL CONTAIN A 22 AWG 7/30 STRANDED TINNED COPPER DRAIN WIRE IN CONTACT WITH THE METALIZED SURFACE FOR EASY TERMINATION.	.138"
JACKET:	POLYVINYLCHLORIDE, BLACK, .037" NOM. WALL THICKNESS	.212"
	OVERALL CABLE DIAMETER	(BY PI TAPE)

2) PHYSICAL PROPERTIES:	
TEMPERATURE RATING, MAX.	80°C & 105°C
TEMPERATURE RATING, MIN.	-40°C
WT./M', NOM., NET.	28.1 LBS.
JACKET IS SUNLIGHT RESISTANT	

3) ELECTRICAL CHARACTERISTICS:	
CAPACITANCE, MUTUAL, NOM.	31 PF/FT
CAPACITANCE, GROUNDED, NOM.	57 PF/FT
DIELECTRIC WITHSTANDING, MIN.	2000V RMS
VOLTAGE RATING, MAX.	300V
D.C. RESISTANCE, MAX.	10.5 Ω/1,000'

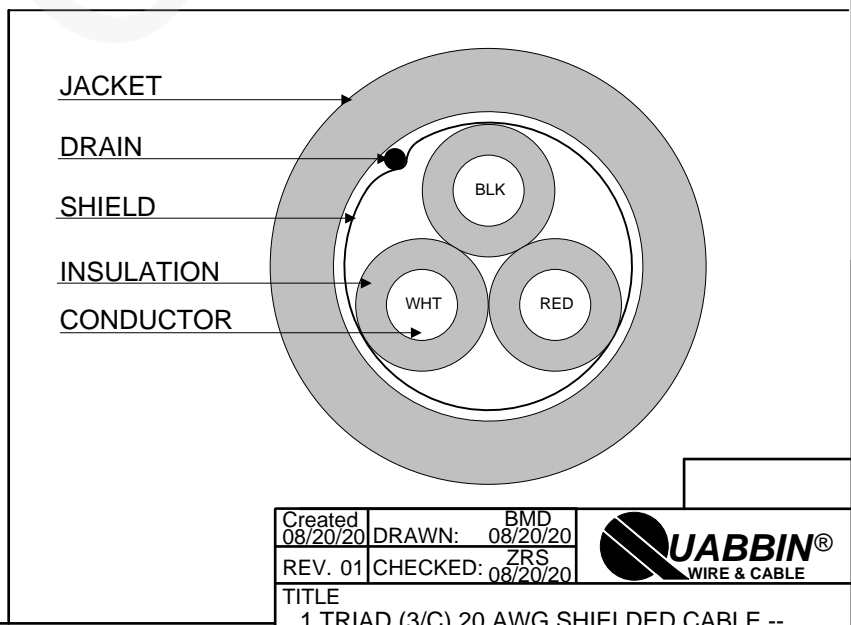
- 4) AGENCY APPROVALS:
- NEC (UL) TYPE PLTC
 - NEC (UL) TYPE ITC
 - NEC (UL) TYPE CM
 - CEC C(UL) TYPE CM
 - UL AWM STYLE 2464

5) APPLICATION:
 PROCESS SYSTEM INTERCONNECT. POWER LIMITED TRAY CABLE, INSTRUMENTATION TRAY CABLE. CLASS 3 CIRCUITS. RoHS COMPLIANT MATERIALS.

6) PRINT: (WHITE INK)
 QUABBIN P/N 0335 (UL) TYPE PLTC OR ITC 20 AWG SHIELDED 105C SUN RES OR C(UL)US CM OR AWM 2464 -- RoHS --
(LOT DESIGNATOR)

7) COLOR CODE:
 TRIAD: BLACK X RED X WHITE

8) PACKAGING
 TO BE PACKAGED AS PER QWC'S STANDARD PACKAGING



Created 08/20/20	DRAWN: BMD 08/20/20	
REV. 01	CHECKED: ZRS 08/20/20	
TITLE 1 TRIAD (3/C) 20 AWG SHIELDED CABLE -- TYPE PLTC, TYPE ITC, TYPE CM, STYLE 2464		
QUABBIN P/N	0335	1 of 1

CUSTOMER APPROVAL: _____ DATE: _____